

Micro-CT低对比度模体

作为评估对比可检测性的有用工具，MicroCT低对比度模体提供两种不同对比度的四个插件，每个对比度有两个不同的尺寸的两个插件

MicroCT低对比度体模是一种圆柱形体模，其中相对于背景具有指定对比度的小细节（圆柱形插入物）允许估计Micro-CT扫描仪的低对比度分辨率。

CT数(HU)的差异可分别低至-40 HU和-80 HU [1]。实际值略有不同，具体取决于扫描仪几何形状、校准和管电压。

产品特点

基材 树脂

低对比度插件:

直径 1 mm / 2.5 mm

近似对比度 -4 % / -8 %

小鼠模型的尺寸:

直径 32 mm

长度 40 mm

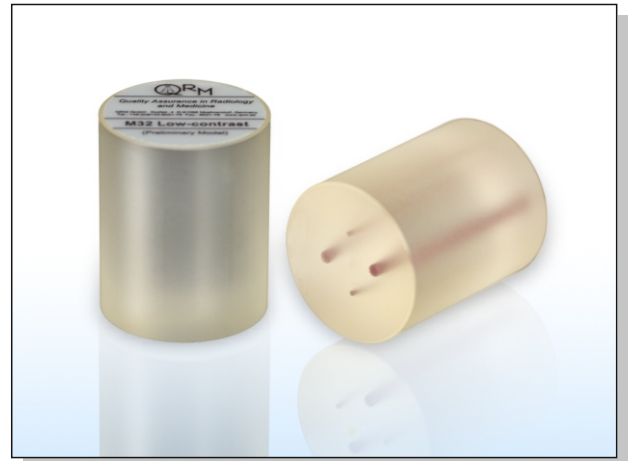
重量 35 g

其他尺寸和对比

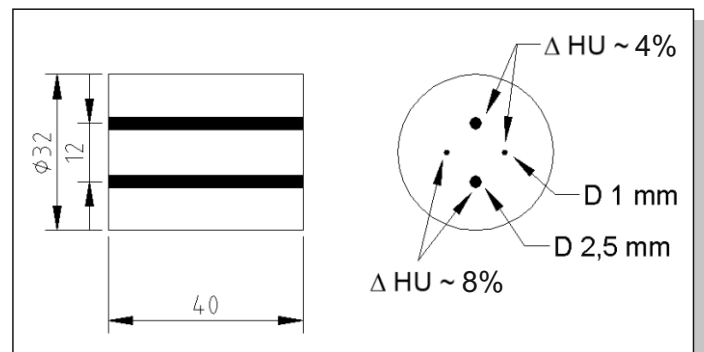
References:

[1] Kalender, W., Durkee, B., Langner, O., Stepina, E., Karolczak, M.: Comparative Evaluation: Acceptance Testing and Constancy Testing for Micro-CT Scanners.

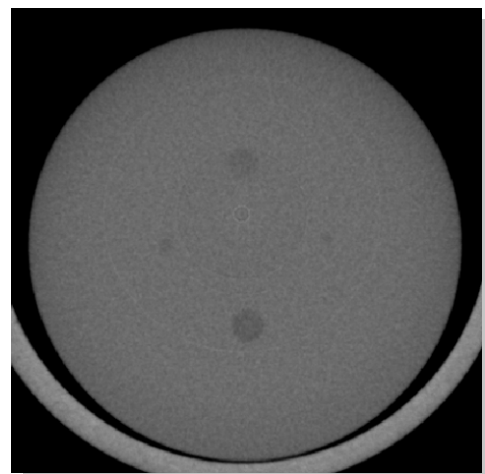
Biomedizinische Technik 50 (2005), 1192-1193



Micro-CT低对比度模体



Schematic drawing of the Phantom



Micro-CT扫描图像

Micro-CT Low Contrast Phantom

As a useful tool for evaluation of contrast detectability the MicroCT Low Contrast Phantom provides four inserts of two different contrast levels, each in two different

The MicroCT Low Contrast Phantom is a cylindrical phantom in which small details (cylindrical inserts) at a specified contrast with respect to the background allow for an estimation of the low-contrast resolution of a Micro-CT scanner.

The difference in CT-numbers (HU) can be as low as -40 HU and -80 HU, respectively^[1]. Actual values vary slightly depending on scanner geometry, calibration and tube voltage.

Specifications

Base material resin

Low contrast inserts:

Diameter 1 mm / 2.5 mm
approx. contrast -4 % / -8 %

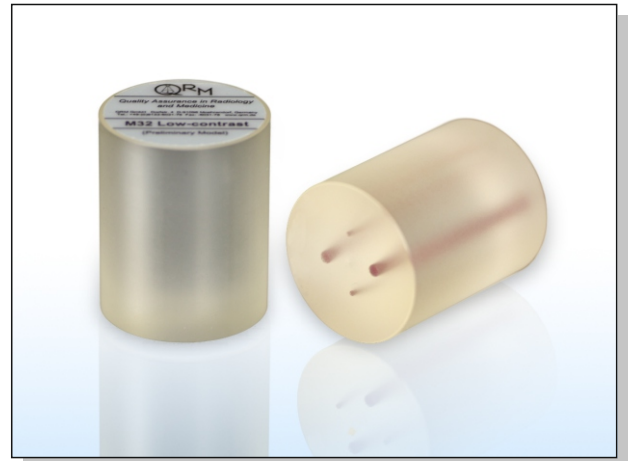
Dimensions for mouse-size phantom:

Diameter 32 mm
Length 40 mm
Weight 35 g

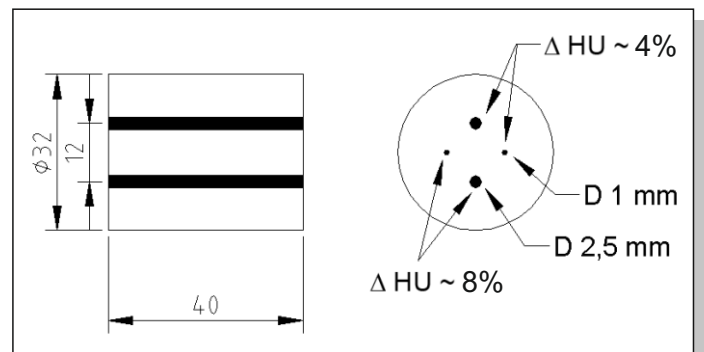
Other dimensions and contrast steps upon

References:

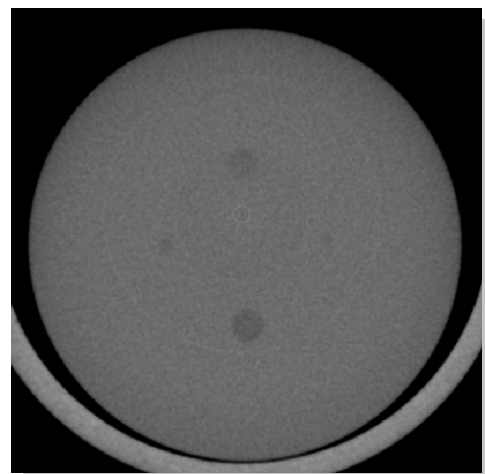
[1] Kalender, W., Durkee, B., Langner, O., Stepina, E., Karolczak, M.: Comparative Evaluation: Acceptance Testing and Constancy Testing for Micro-CT Scanners. Biomedizinische Technik 50 (2005), 1192-1193



Micro-CT Low Contrast Phantom



Schematic drawing of the Phantom



Micro-CT scan of the phantom