

Micro-CT水模体

Micro-CT水模体可用于测量噪声和均匀性。由于其优化设计提供了额外的“空气”腔，因此可以轻松无气泡地填充蒸馏水。

Micro-CT水模体是一个充满蒸馏水的空心圆柱体。

它在凸形封闭头上提供入口/出口螺钉，因此可以在旋转龙门或直立位置使用。

如果在水平位置使用，模型的上部有一个小空腔，可以保留气泡。

该模型由稳定的透明塑料制成，密度低（1.0 g/cm³）。透明的壁可以轻松检测水中的气泡。

Micro-CT水模体产品特点：

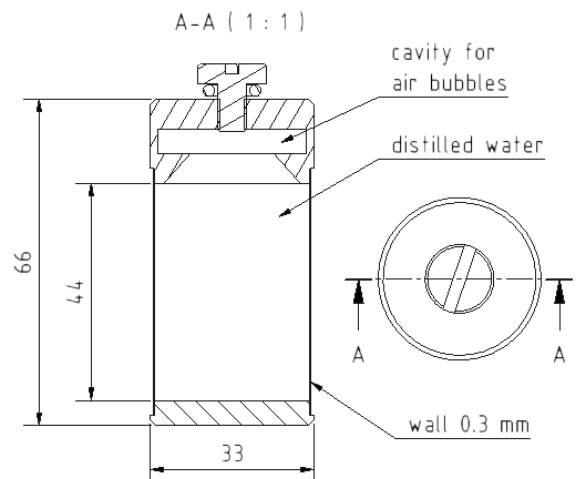
- 基材 坚固透明塑料
- 室壁厚度 0.4 mm
- 直径..... 20, 32, 60 mm
(也可以根据需求定做)
- 长度..... 66 or 120 mm
- 内长..... 44 or 98 mm
- 重量 20 - 60 g

References:

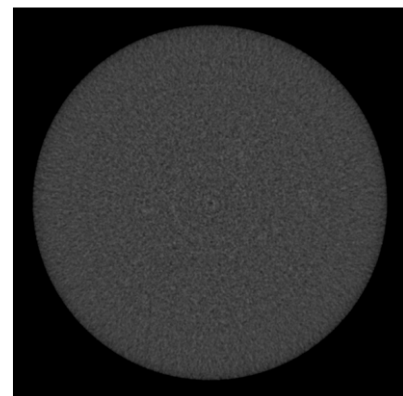
[1] Kalender, W., Durkee, B., Langner, O., Stepina, E., Karolczak, M.: Comparative Evaluation: Acceptance Testing and Constancy Testing for Micro-CT Scanners. Biomedizinische Technik 50 (2005), 1192-1193



标准版 (Ø 20, 32 and 60 mm) QRM Micro-CT 水模体



模型的总体设计 (32毫米版本)



测量噪声和均匀性

Micro-CT Water Phantom

The MicroCT-Water Phantom can be used for measuring noise and homogeneity. It can easily and bubble free filled with distilled water due to its optimized design providing an extra 'air' cavity.

The MicroCT-Water Phantom is a hollow cylinder to be filled with distilled water.

It offers an intake/outlet screw in a convex closure head such that it can be used in a rotating gantry or in upright position.

The phantom provides a small cavity in the upper part detaining air bubbles if used in a horizontal position.

The phantom is made of a stable transparent plastic providing a low density (1.0 g/cm³). The transparent wall allows to easily detect air bubbles in the water.

Specifications

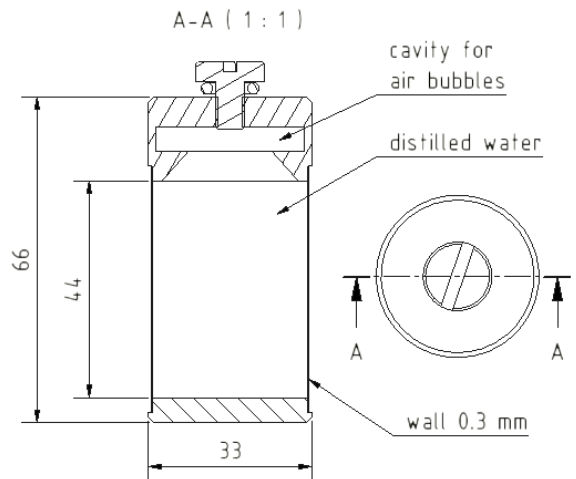
- Base material rugged transparent plastic
- Wall thickness 0.4 mm
- Diameter 20, 32, 60 mm or upon request
- Length 66 or 120 mm
- Inner length 44 or 98 mm
- Weight 20 - 60 g

References:

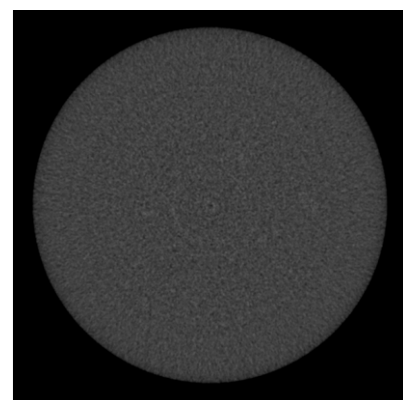
[1] Kalender, W., Durkee, B., Langner, O., Stepina, E., Karolczak, M.: Comparative Evaluation: Acceptance Testing and Constancy Testing for Micro-CT Scanners. Biomedizinische Technik 50 (2005), 1192-1193



Standard versions (Ø 20, 32 and 60 mm) of the QRM Micro-CT Water Phantom



General design of the phantom (32 mm version)



Measuring noise and homogeneity