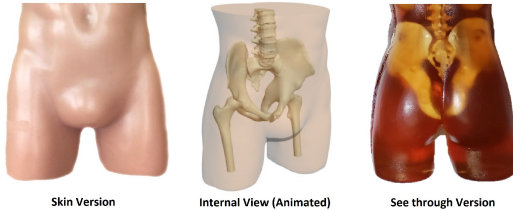


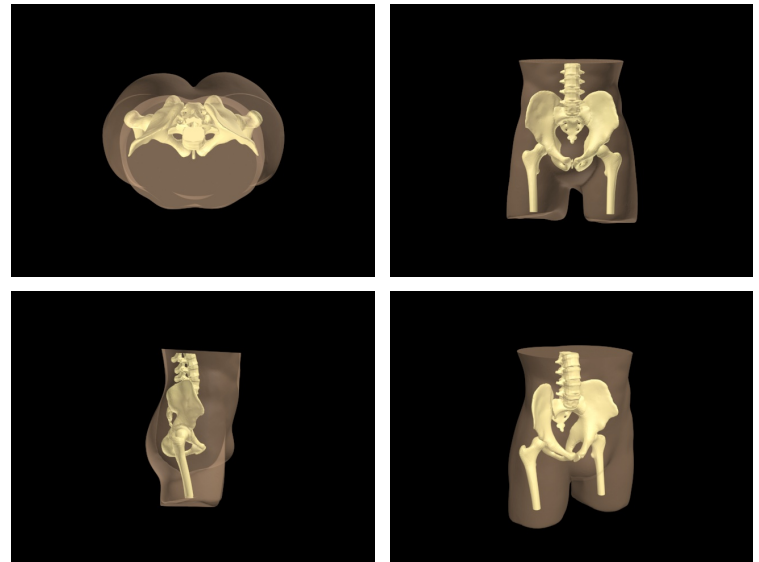
Adult Pelvis Phantom



Skin Version

Internal View (Animated)

See through Version



CT-A03

The **Adult Pelvis Phantom** is designed based on an average human anatomy and it is made out of realistic patented bone material that is suitable for CT applications. It can be used for medical imaging research, radiology training and testing and calibration of X-Ray machines.

The following anatomical structures are included:

- Lumbar sacral spine
- Pelvis bone with anatomically correct structures and shape
- Partial femoral bones
- Realistic soft tissue surrounding the bone

The bones have a realistic three-layered structure with inner porosity which can be adjusted according to the requirement of the particular project.

The phantom can be customized in size and shape (i.e. based on the individual's CT scan).

Materials used:

- Soft tissue and organs: Composition of urethane base resin
- Synthetic bones: Patented ceramic-reinforced epoxy-based composite material

Dimensions and Weight:

Size: 85 x 32 x 32 cm (approx.) Weight: 40 kgs (approx.)

Your order will Include:

- Male Standard Pelvis
- Design video
- Manual
- Hard carry case (optional)