

Sono408™ Spherical Lesion Phantom

Precisely measure spatial resolution
in three dimensions.

- Test axial, lateral and elevational resolution simultaneously
- Tailor your testing to the unique qualities of spherical lesions
- Test high frequency transducers used in echocardiography



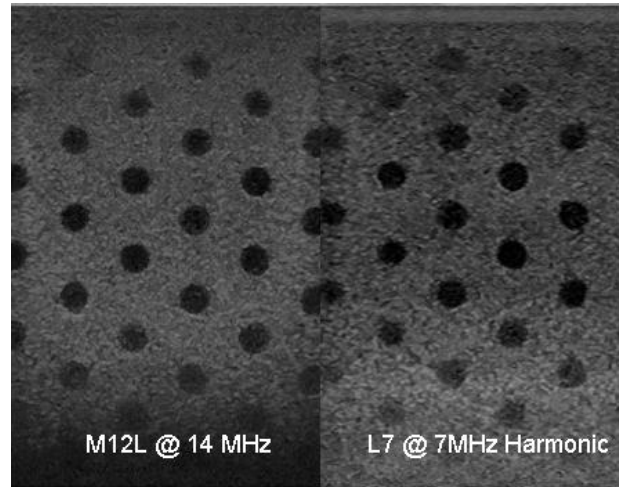
Spherical lesions demand a different kind of testing. They have negligible echogenicity and produce no distal enhancement or shadowing. Therefore, spatial resolution should be measured in the axial, lateral and elevational directions. The thinner the ultrasound beam, the better the elevational resolution of the system.

The Sono408 Phantom allows you to:

- Check for targets at both 0.5 cm and 0.75 cm depth intervals
- Test multiple resolutions at depths from 0.5 to 16 cm with 2 mm and 4 mm diameter lesions

Gammex's HE (High Equivalency) Gel™, featured in Sono408 Phantoms, is optimized for use with tissue harmonics imaging.

- HE Gel-based phantoms have a near-linear response of attenuation-to-frequencies between 2 to 18 MHz
- The response of attenuation-to-frequencies over 8 MHz supports accurate axial resolution and penetration depth representative of human tissue^{1,2}



The Sono408 Phantom incorporates both 2mm and 4mm diameter tissue mimicking spherical lesions which lie in a single plane at the center of the phantom.

"The tissue-like properties in Gammex ultrasound phantoms make them ideal for testing the performance of scanners."

James A. Zagzebski, Ph.D., FAAPM
Professor Emeritus, Retired Chair
Department of Medical Physics,
Wisconsin Institutes for Medical Research

Sono408 Spherical Lesion Phantom

- Test axial, lateral and elevational resolution simultaneously
- Test high frequency transducers used in echocardiography
- HE Gel is very uniform and has a nonlinearity parameter (B/A) that is equivalent to human liver
- HE Gel can be rejuvenated and your phantom re-validated any time to strengthen your investment

Accessories

- Padded travel case with shoulder strap



Specifications

HE Gel™: Gammex's multi-frequency tissue mimicking material

Attenuation Coefficient ³ :	0.5 or 0.7 dB/cm/MHz
Variation of Attenuation with Frequency ^{1,4} :	f ^{1.08} at 0.5 dB/cm/MHz f ^{1.1} at 0.7 dB/cm/MHz
HE Gel Freezing Point:	<0°C
HE Gel Melting Point:	>100°C
Frequency Range ¹ :	2 - 18 MHz
Speed of Sound:	1540 m/s

Feature	Sono408
Tissue Mimicking Material, Patented Multi-Frequency HE Gel™:	✓
Speed of Sound:	1540 m/s
Frequency Range ¹ :	2 - 18 MHz
Anechoic Spherical Lesions:	211 4 mm diameter lesions in a plane, spaced vertically at 0.5 cm apart and horizontally at 0.75 cm apart; at depths of 0.5 to 16 cm 105 2 mm diameter lesions in a plane, spaced at 0.5 cm apart vertically & horizontally; at depths of 0.5 to 10.5 cm
Contrast:	<-25 dB

Construction	Sono408
Scanning Surface:	Patented Composite Film
Container:	ABS
Dimensions:	23.2 x 8.3 x 18.5 cm (9.25 x 3.25 x 7.25 in)
Weight:	2.8 kg (6 lbs. 5 Oz.)
All acoustic measurements at 4.5 MHz, 22°C	