

3D Sectional Torso Phantom

Model 600



INCLUDES 12 INTERNAL ORGAN TISSUES

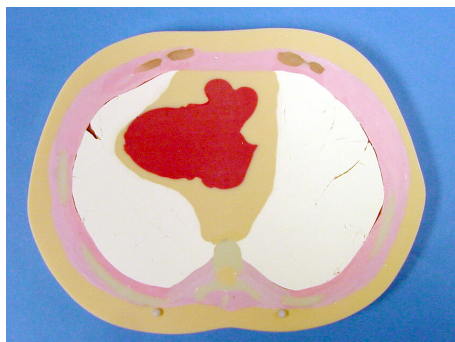
The CIRS Model 600 Anthropomorphic Torso Phantom is designed to provide an accurate simulation of an average torso (22 cm posterior-anterior thickness) for medical imaging and dosimetry applications. The epoxy materials used to fabricate the phantom provide optimal tissue simulation between the Diagnostic and Therapy energy range (40 keV to 20 MeV).

Unlike other cross-sectional dosimetry phantoms, the Model 600 includes internal organ structures such as the lungs, heart, liver, kidneys, spleen and pancreas. All simulated organs match the tissue density of actual organs and can be clearly visualized.

The lower portion of the phantom contains a soft bolus material simulating a mix of 30 percent adipose and 70 percent muscle tissue. Simulated muscle material layers the rib cage and vertebral column. The exterior envelope simulates a mix of 43 percent adipose and 57 percent muscle tissue. Standard phantoms consist of 25 mm thick contiguous sections.

Features

- Includes internal organ structures
- Ideal for calibration, QA and training purposes when specific internal organs are of interest
- Can be configured to accommodate variety of dosimeters
- Usable on any X-ray imaging or treatment device



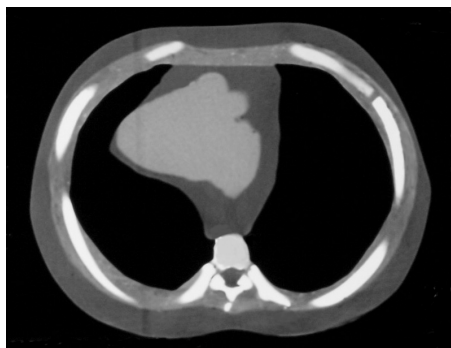
Heart Level Section



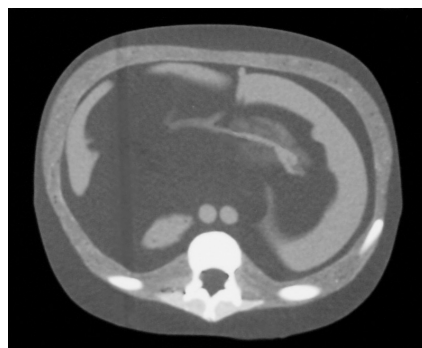
Liver Level Section



Kidney Level Section



CT of Heart Level Section



CT of Liver Level Section



CT of Kidney Level Section

SPECIFICATIONS

OVERALL DIMENSIONS	50 cm x 22 cm
WEIGHT	86 lbs. (32.1 kg)
MATERIALS	Tissue-Equivalent Epoxy Resin

MODEL 600 INCLUDES

QTY	DESCRIPTION
1	3D Sectional Torso Phantom with Tissue-Equivalent Skeletal Structure, Lungs, Heart, Liver, Pancreas, Spleen and Kidneys (Numbered as sections 1-20)
1	Reinforcement Base
1	Reinforcement Top with Threaded Assembly
1	Open-End Wrench
1	Bag of Extra String for reinforcement assembly
1	Roll of Black (light proof) Electrical Tape
1	Foam Lined Carry Case
1	User Guide
-	48-Month Warranty



Fully Assembled Model 600



深圳为尔康科技有限公司 联系人：曾祥满 手机：13632925349

QQ：274798107 电话：0755-28896837 地址：深圳市龙岗区沙平北路111号608A

网址：www.medicalQC.com 邮箱：szchina1718@163.com