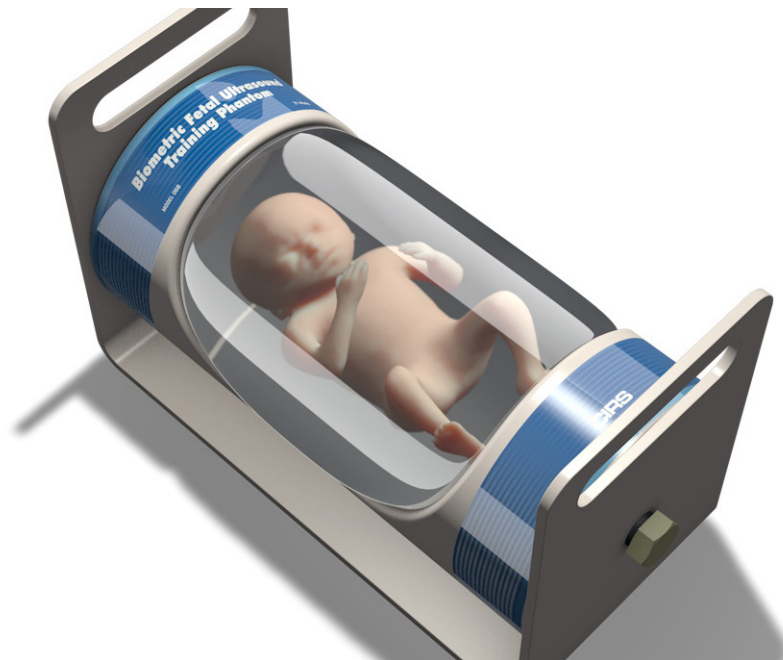


# Fetal Ultrasound Biometrics Phantom

Model 068



## DEMONSTRATE • TEACH • PRACTICE

The mid-term ultrasound exam is used to estimate gestational age and to diagnose fetal malformation. Students gain competency with hands-on practice. Unfortunately, access to patients can be limited. The CIRS Model 068 Fetal Ultrasound Biometrics Phantom facilitates teaching and demonstration of fetal ultrasound techniques in a non-stressful situation.

A tissue equivalent full fetal model is suspended in a non-echoic, amniotic fluid-like environment. The model is housed in a rotatable cylinder with 2 fields of view. A variety of fetal/transducer orientations can be achieved.

The Model 068 contains an asymmetric head with upper portion of the skull, right and left brain lobes and lateral and third ventricles. These anatomical references are used to measure the biparietal diameter (BPD) and anterior/posterior diameter (APD). Right and left femoral shafts with distal epiphysis are provided for femur length (FL) measurements. An umbilical marker indicates proper position for taking abdominal circumference (AC). Crown-Rump length (CRL) can also be

taken. In addition, the model has full facial details making it suitable for demonstrating multidimensional systems and assessment of fetal anomalies.

All anatomies are based on published biometric data for normal fetal growth rates for a gestational age of 21 weeks. This enables assessment of composite measurement techniques and biometric analysis programs common to most ultrasound scanners.

### Features

- Demonstrate system capabilities
- Teach imaging protocols to estimate gestational age
- Practice 2D, 3D & 4D fetal scan techniques
- Measure CRL, BPD, FL and AC
- Gain competency in performing prenatal ultrasound



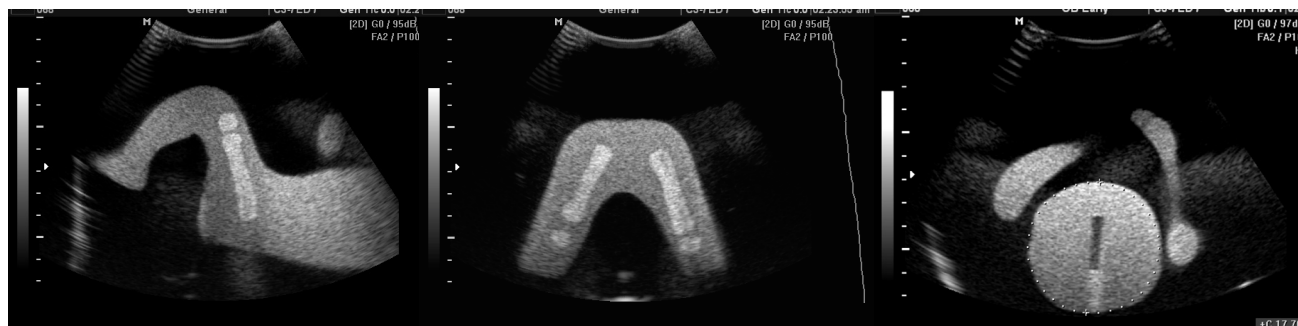
3D Reconstruction



Axial Brain & BPD Measurement

Sagittal Brain

Sagittal Abdomen with IVC Marker



Femoral Length for Measurements

Abdominal Circumference for Measurement

**SPECIFICATIONS**

<b>DIMENSIONS:</b>	35 cm x 17 cm x 17 cm (5.4" x 2.6" x 2.6")
<b>TARGETED BIOMETRIC DIMENSIONS:</b>	BPD: 4.2 cm (10th percentile) APD: 5.8 cm Head Circumference: 16 cm (16th percentile) Femoral Length: 3.8 cm Abdominal Circumference: 17.5 cm Crown-Rump Length: 22 cm
<b>PHANTOM WEIGHT:</b>	8.9 kg (24 lbs.)
<b>MATERIALS:</b>	Housing: PVC, Vinyl & ABS Phantom: Proprietary Gels

**MODEL 068 INCLUDES**

QTY	COMPONENT DESCRIPTION
1	Fetal Ultrasound Biometrics Phantom
1	Nylon Transducer Cover
1	User's Guide
-	6 Month Warranty

**OPTIONAL ACCESSORIES**

MODEL	DESCRIPTION
9505	Case for Ultrasound Biometrics Phantom

**Reference:**

Hansmann, M. (1985) Ultrasound Diagnosis in Obstetrics and Gynecology, Springer, Berlin.



深圳为尔康科技有限公司 联系人：曾祥满 手机：13632925349

QQ：274798107 电话：0755- 28896837 地址：深圳市龙岗区沙平北路111号608A

网址：www.medicalQC.com 邮箱：szchina1718@163.com