

part number CTP508

Catphan 508 体模具有与 Catphan® 500 相同的测试模块，不同之处在于 CTP486 均匀性模块被替换为 CTP738-1 水箱。此外，对安装板进行了修改，以适应水箱注水塞的操作。

CTP738-1 水箱由聚碳酸酯塑料制成。该罐有一个内置的气泡壁，允许空气被截留在罐的末端，远离均匀的测量区域。在水箱中留下一些空气可以使水在水箱内膨胀或收缩。

有关该模型中包含的测试模块的更多详细信息，请查看 Catphan500 模型的技术信息和手册。

Catphan508 CT性能模体，Catphan508性能模体测试总结

CTP401

- 感光（线性）
- 扫描切片几何（切片宽度和切片灵敏度分布）
- 像素（矩阵）大小
- 圆对称
- 体模位置验证
- 患者对位系统检查
- 扫描增量

CTP528

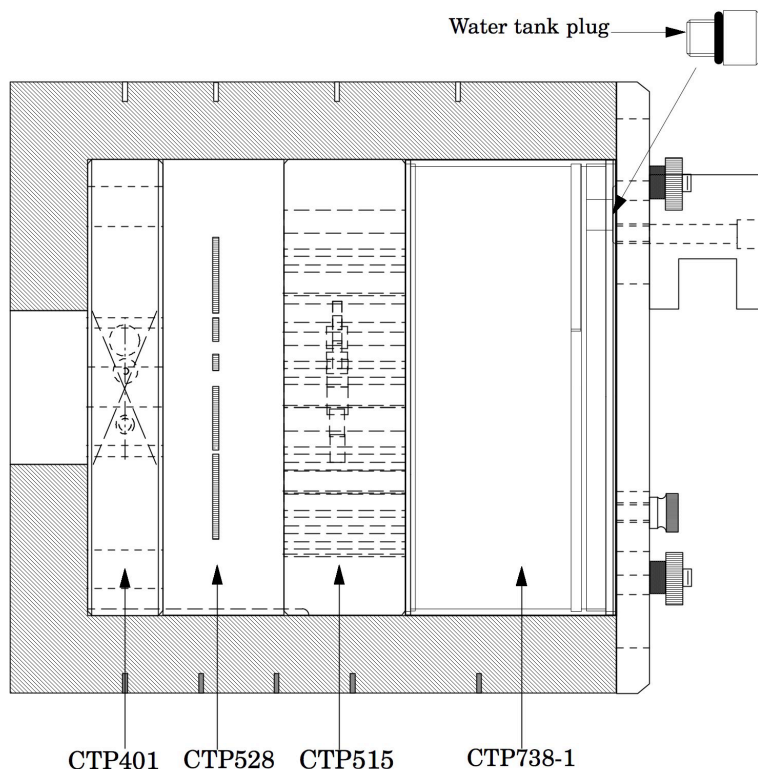
- 高分辨率测量 - 每厘米高达21线对

CTP515

- 低对比度灵敏度
- 比较子切片和超片低对比度敏感度

CTP738-1 水箱：

CTP738-1 水箱由聚碳酸酯塑料制成。该罐有一个内置的气泡壁，允许空气被截留在罐的末端，远离均匀的测量区域。在水箱中留下一些空气可以使水在水箱内膨胀或收缩



Catphan® 508

The Catphan® 508 phantom has the same test modules as the Catphan® 500 except for the CTP486 uniformity module is replaced with the CTP738-1 water tank. In addition the mounting plate is modified to accommodate access to the water tank fill plug.

The CTP738-1 water tank is manufactured from polycarbonate plastic. The tank has a built in bubble wall allowing air to be trapped at the end of the tank away from the uniform measurement area. Leaving some air in the tank enables the water to expand or contract within the tank.

For greater detail on the test modules contained in this phantom please review technical information and manuals for the Catphan® 500 phantom. If you would like a pdf version, it can be downloaded from our website: phantomlab.com