

# Female Ultrasound Training Pelvis

Model 404A



## TEACH • TRAIN • PRACTICE

The gynecological ultrasound exam is an important diagnostic tool. Students gain competency with hands-on practice. Unfortunately, access to patients can be limited. The Model 404A Female Ultrasound Training Pelvis facilitates teaching and demonstration of gynecological ultrasound techniques in a non-stressful situation.

Our Model 404A consists of an external female pelvic model containing a uterus, fallopian tubes, ovaries, bladder and rectal landmarks useful for scanning. The phantom has both abdominal and vaginal scanning access allowing a variety of transducer orientations.

The Female Ultrasound Training Pelvis creates a relaxed learning environment for teaching and developing ultrasound examination skills and techniques as well as demonstrating 3D ultrasound capabilities.

### Features

- External anatomy
- Abdominal and vaginal scanning access
- Uterus with endometrium and myometrium
- Ovary with follicles
- Full bladder
- Rectal landmarks
- Realistic Scanning

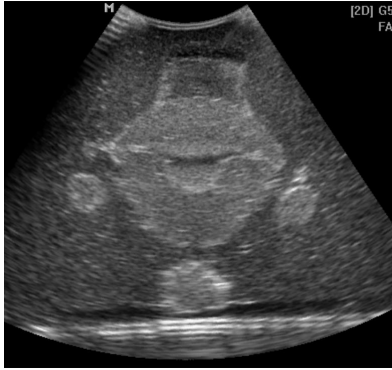
CIRS 404A 女性盆腔模体，CIRS 404A 超声训练骨盆模体是一种重要的诊断工具。学生通过动手实践获得能力。不幸的是，接触患者可能受到限制。CIRS 404A 女性盆腔模体，CIRS 404A 超声训练骨盆模体有助于在无压力情况下教授和演示妇科超声技术。

我们的CIRS 404A 女性盆腔模体，CIRS 404A 超声训练骨盆模体由一个外部女性盆腔模型组成，其中包含用于扫描的子宫、输卵管、卵巢、膀胱和直肠标志。体模具有腹部和阴道扫描通道，允许各种换能器方向。

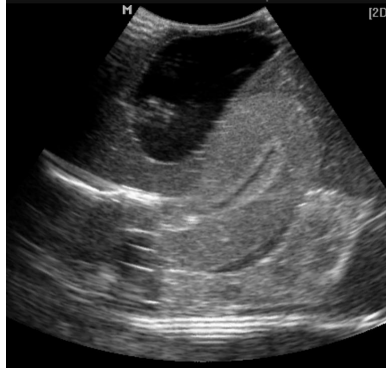
女性超声训练骨盆为教授和发展超声检查技能和技术以及展示 3D 超声能力创造了一个轻松的学习环境。

# CIRS

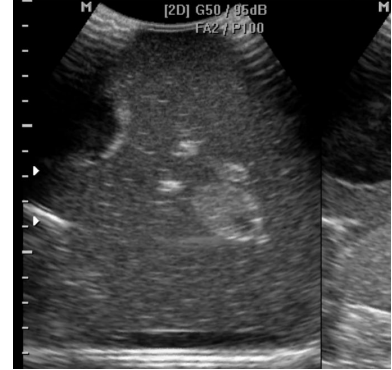
Tissue Simulation & Phantom Technology



Transabdominal of uterus



Trans-vaginal of uterus, bladder and rectum



Ovary with follicles

SPECIFICATIONS

<b>DIMENSIONS</b>	15 cm x 11 cm x 11 cm (5.9" x 4.3" x 4.3")
<b>PHANTOM WEIGHT</b>	2 kg (4.4 lbs.)
<b>MATERIALS</b>	Z-Skin™ elastomer and Zerdine®
<b>INTERNAL STRUCTURE</b>	Vaginal Canal Cervix Uterus with Endometrium, Myometrium and Uterine Cavity Fallopian Tubes Homogeneous Left Ovary Right Ovary containing follicles Iliac Vessels

MODEL 404A INCLUDES

QTY	COMPONENT DESCRIPTION
1	Female Ultrasound Training Pelvis
1	User Guide
-	12-Month Warranty*

\*Please note: once any device has been inserted into the phantom (such as biopsy needles, localization wires, etc.) the 12 month warranty will not cover claims related to material desiccation or needle tracking.