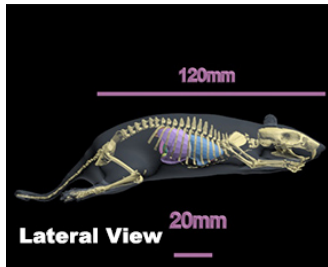
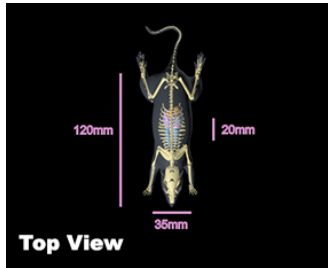


Rat Phantom (Anatomical)



RT-A01

Rat Phantom for R&D is an anatomically correct phantom of a mouse (rat) suitable for either X-Ray/Ultrasound/MRI imaging methods and it can be customized to excel in selected imaging modality. It is a powerful tool which can be used for testing and calibration of various medical imaging devices.

The model shown on the images has the following internal structures:

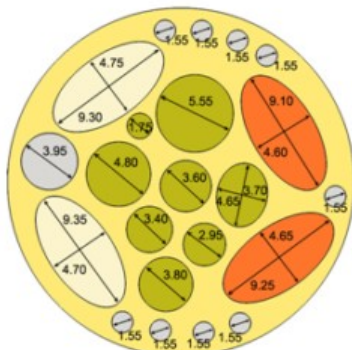
- Full skeleton
- Heart
- Lungs
- Diaphragm
- Liver
- Kidneys
- Pancreas
- Spleen

The phantom can be customized in size and shape.

PLEASE NOTE: WE CAN CUSTOMIZE THIS PRODUCT BASED ON YOUR REQUIREMENTS

Type of tissue phantom	Averaged HU value	Density [g/cm ³]	Hardness [Shore OO]
Soft Tissue	134	1.03	35
Bones	2397	2.31	N/A
Lungs	-908	N/A	N/A
Organs	83	1.01	35

Rat Phantom (Cylindrical)



LEGEND:

- Transparent (#1) - body tissue without speckles (hardness Shore OO-30)
- Transparent (#2) - body organs without speckles (hardness Shore OO-60)
- Red (#3) - body organs with speckles (hardness Shore OO-60)
- Cartilage (#4) - cartilage tissue (hardness Shore OO-85)
- Non-transparent (#5) - soft organs with speckles (hardness Shore OO-20)

*All units are in millimeters

RT-C01

Rat Phantom Cylindrical For R&D can be fabricated either as a simple cylinder or as an anatomically correct mouse (rat). Both phantoms are powerful tools which can be used for testing and calibration of various medical imaging devices.

The cylindrical version has 27mm diameter and 70mm height which correspond to the dimensions of small animals (i.e. a laboratory mouse.)

The small phantom is ultrasound, MRI and CT compatible and it can be customized in size and shape. The internal features can be also modified in terms of shape and properties to fit the needs of any particular bio-medical research project.

PLEASE NOTE: WE CAN CUSTOMIZE THIS PRODUCT BASED ON YOUR REQUIREMENTS

Type of the tissues:	Sound velocity [m/s]	Density [g/cm ³]	Hardness [Shore 00]	T2 [ms]	Speckles	Attenuation measured at 2.25 MHz [dB/cm]
(#1) – Transparent	1400 ± 10	1.01	30	N/A	NO	1.3 ± 0.2
(#2) – Transparent	1400 ± 10	1.03	60	N/A	NO	1.8 ± 0.2
(#3) – Red	1400 ± 10	1.04	60	N/A	YES	1.8 ± 0.2
(#4) – Cartilage	1850 ± 10	1.06	85	N/A	NO	30 ± 2
(#5) – Non-Transparent	1400 ± 10	1	20	N/A	YES	1.0 ± 0.2

深圳为尔康科技有限公司

曾生 : 13632925349 QQ : 274798107

电话 : 0755-28896837

地址 : 深圳市龙岗区沙平北路111号吉茂大厦608A

网址 : www.medicalqc.com