

TOR ABC

Radiography & Fluoroscopy Phantom

A routine test object designed to be used quickly and easily on a regular basis (e.g. weekly/monthly) to provide an ongoing check of beam alignment and centring.

Used for radiography or fluoroscopy, enables the following checks to be made:

- The correspondence of the light field with the effective radiation field.
- The determination of the position of the central beam.
- The central beam angle deviation from 90° , relative to the plane of the film/detector, is below a limit that beyond which the image quality would be adversely affected.





TOR ABC

Radiography & Fluoroscopy

Product detail



fig. 1 TOR ABC



TOR ABC

Radiography & Fluoroscopy

Product detail



Please note:

A special variant is available for Siemens' Vertex system. Please request at time of order.

fig. 2 Vertical bucky jig (hanger)



TOR ABC

Radiography & Fluoroscopy

Product detail



Please note:
A special variant is available for Siemens' Vertex system. Please request at time of order.

fig. 3 Vertical bucky jig (suction)



TOR ABC

Radiography & Fluoroscopy

Product X-ray

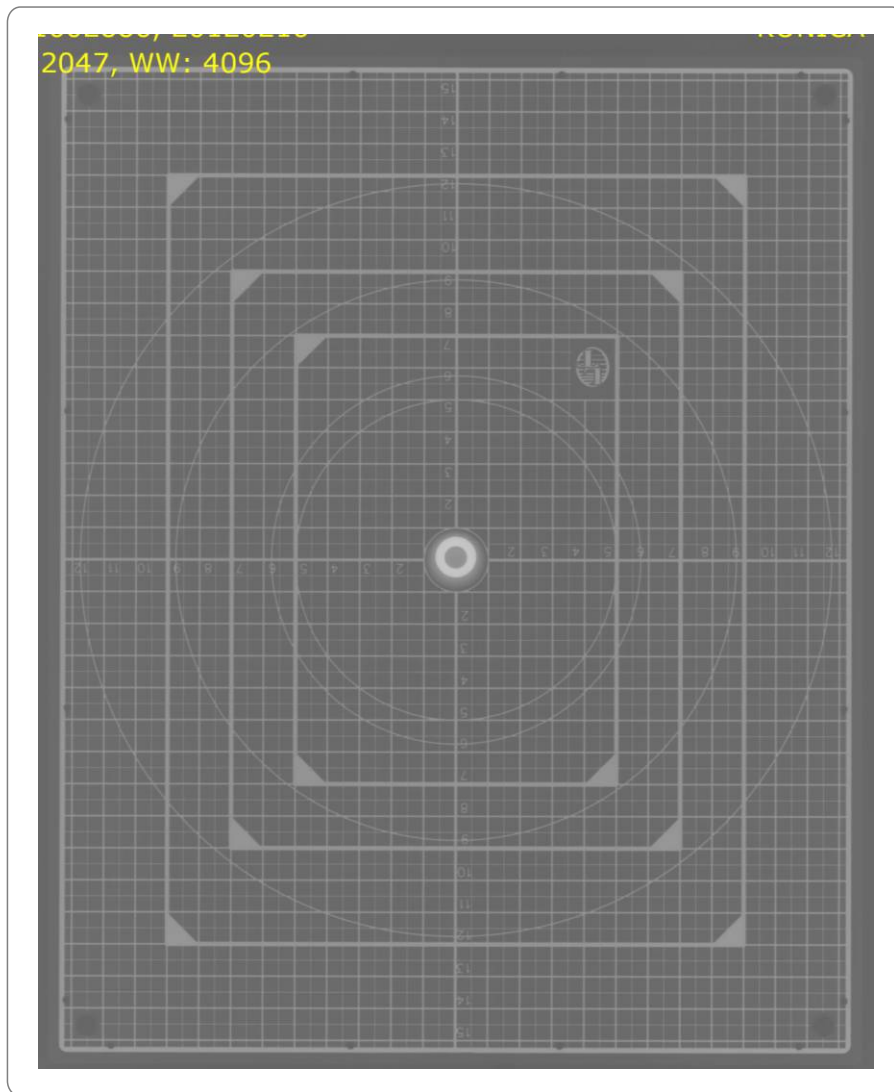


fig. 4 Radiograph of TOR ABC