

part number
CTP700

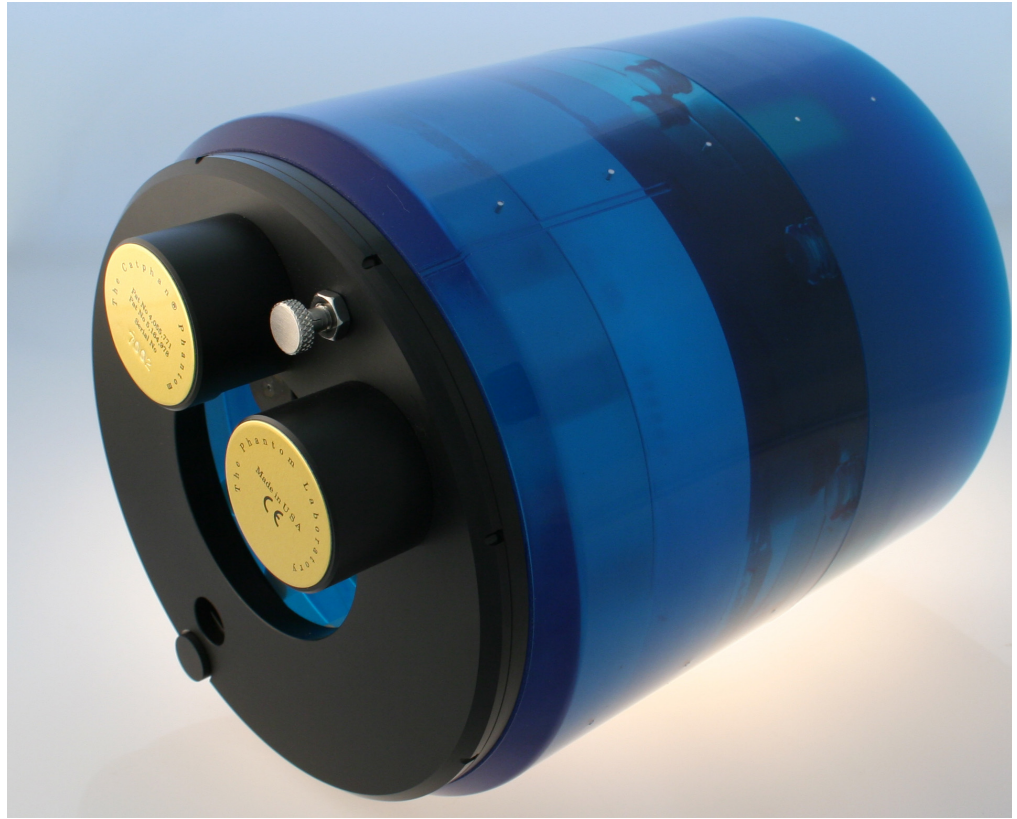
page 1 of 7

Catphan700 CT性能模体,Catphan700性能模体

Catphan700 CT性能模体,Catphan700性能模体旨在用于最先进的CT扫描仪和需要先进的模体测量其全部潜力的研究。

Phantom保留了其他Catphan®型号提供的许多测试和功能,包括CTP515 低对比度模块和集成式机箱安装系统。其他测试对象已经在这一发展中进行了改进,包括在新型CTP714高分辨率模块中添加高达30 lp / cm的测试图案,在CTP682感光片几何模块中包含的低对比度球体阵列中添加了较小的丙烯酸球体,和额外的骨骼和肺部样本,以协助客户使用他们的CT图像进行放疗治疗计划。Catphan700还包含新的CTP721波插件,用于测量扫描区域的切片几何形状和分辨率。

此外,为了解决由于扫描仪x和y轴的测试图形方向而导致的可能的变量,模体具有新的旋转支架。这使得安装后的模体能够以45°的间隔与对准棘爪旋转360°,以研究可能的角位置相关结果。



Catphan® 700

The Catphan® 700 Phantom has been designed to address the image performance measurement requirements for state of the art CT volume scanners. David Goodenough, Ph.D. utilized his 35 years of CT image quality research and testing experience to guide us through the research and development of the Catphan® 700.

The phantom retains many of the tests and features offered in the other Catphan® models including the CTP515 low contrast test module and integrated case mounting system. Other test objects have been refined in this development including the addition of higher resolution test patterns in the new CTP714 1 to 30 line pair per centimeter test module, the addition of smaller acrylic spheres to our low contrast sphere array contained in the CTP682 sensitometry slice geometry module, and additional bone and lung samples to assist customers using their CT images for radiation therapy treatment planning.

Along with numerous modifications, the phantom also contains the new CTP721 wave insert for measuring slice geometry and resolution across the scan area. Also, in order to address possible variables due to test pattern orientation with the scanners x and y axis, the phantom has a new rotation mount. This enables the mounted phantom to be rotated 360° with alignment detents at 45° intervals to study possible angular position-dependent results.



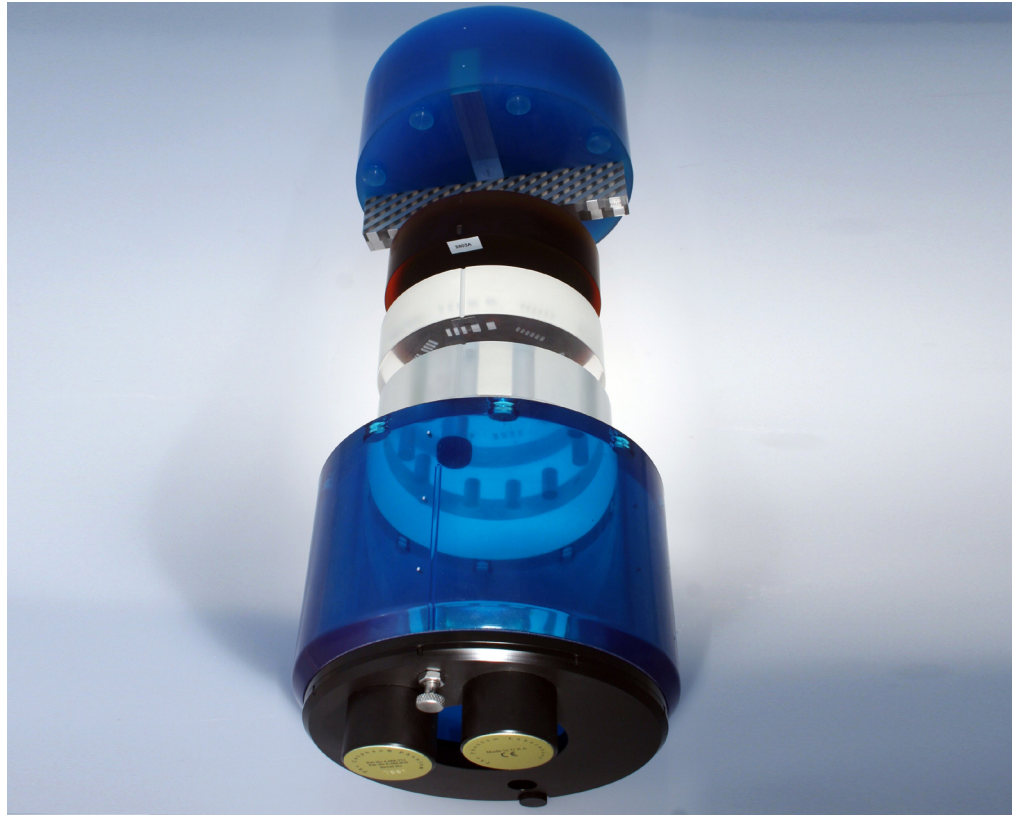
深圳为尔康科技有限公司 联系人:曾祥满 手机:13632925349

QQ:274798107 电话:0755-28896837 地址:深圳市龙岗区沙平北路111号608A

网址:www.medicalQC.com 邮箱:szchina1718@163.com

part number
CTP700

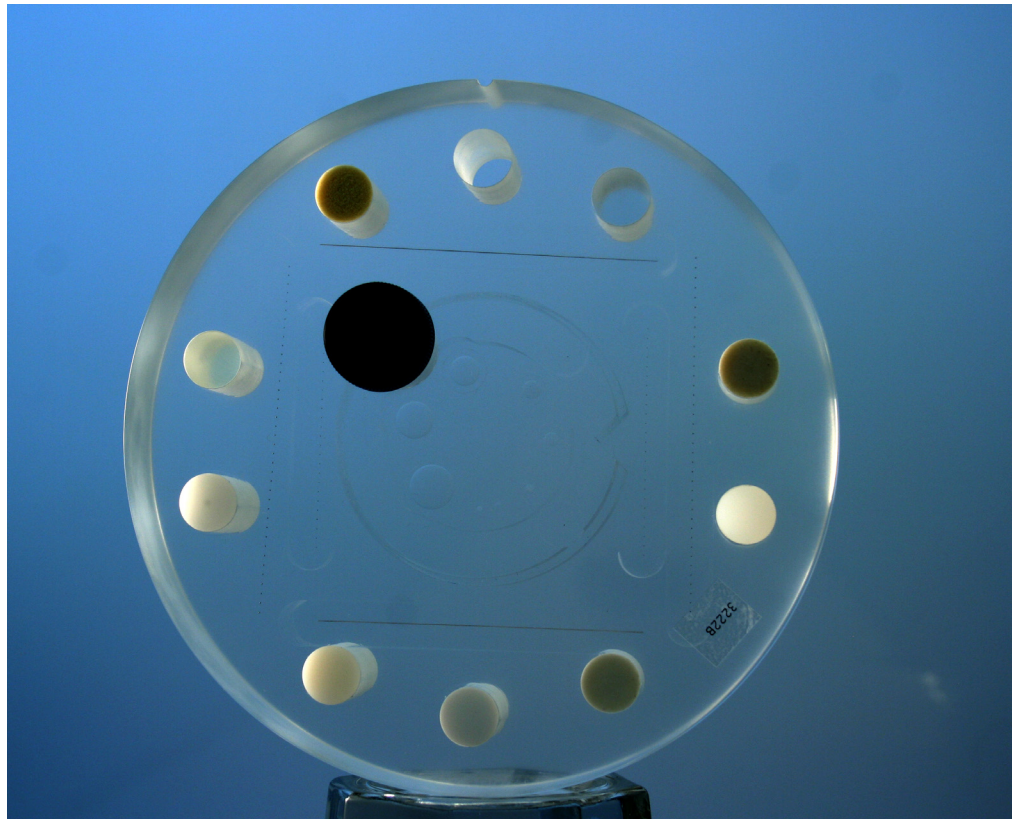
page 2 of 7



Catphan® 700 design and construction

Test precision, durability, and efficient operation are the key design. The Catphan® 700 continues to utilize the modular concept developed with the original Catphan® phantom. The three solid cast test modules are mounted inside the phantom's housing. The wave insert and complementary MTF bead blocks press into pockets on the uniformity body that attaches to the module housing. The new rotating mount is connected to the module housing. Using the new mount, the phantom can be quickly cantilevered off the end of the table and rotated into various angular positions to allow for artifact free scanning.

While most customers will never choose to disassemble their phantom, special care was taken in the development of the Catphan® to enable disassembly for potential upgrades or modifications. To prevent hardware artifacts, no metal hardware is used to connect the wave uniformity section to the module housing or between the housing and the mount.



CTP682 Geometry Sensitometry Module

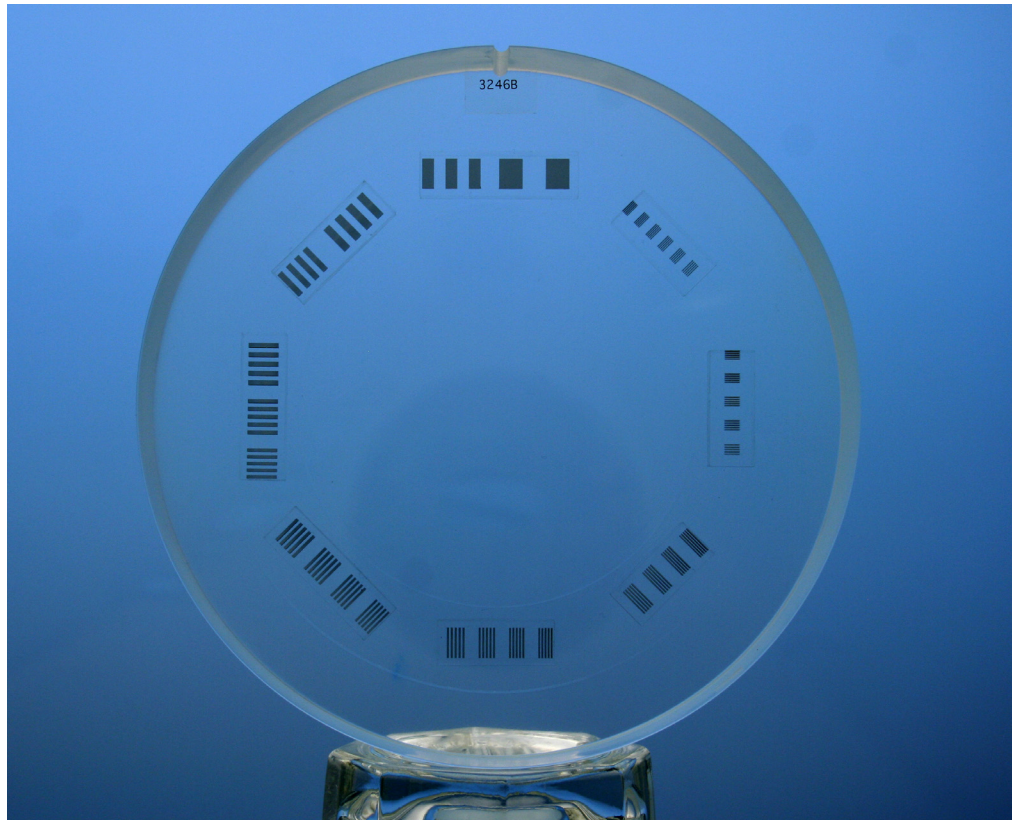
The CTP682 module contains three sets of opposed slice geometry ramps. One of the ramp sets uses .15mm steel wires set at 23° ramp angles to produce ramp images with a 2.4 magnification to reduce the effects of limited image measurements. Additionally, the small diameter wires reduce over-range streaking artifacts. The other two ramp sets are made from tungsten carbide beads. The coarse ramp with a z axis height of 38mm uses 0.28mm beads set in 1mm z axis increments and the fine ramps use 0.18mm beads set at .25mm z axis increments. The opposing pairs of ramps allow operators to easily verify whether the phantom is correctly aligned with the scanner axis. By measuring the ratio between opposed ramps, gantry angles up to 10° can be verified, avoiding erroneous measurements.

For sensitometry measurements, this module has 10 samples and a water container. The materials include Teflon, 50% Hydroxyapatite, Delrin, Acrylic, Polystyrene, LDPE, PMP, and Air. Pixel size can be calculated by counting the number of pixels between the four precisely machined test cylinders, which form a square in the x and y directions. The module also contains eight acrylic spheres to evaluate the scanner's imaging of subslice spherical volumes. The diameters of the acrylic spheres are 1mm, 1.5mm, 2mm, 3mm, 4mm, 6mm, 8mm, and 10mm.

For detailed MTF and SSP calculations, two isolated beads 0.28mm and .18mm in diameter are located in the mid plane of the module. For thin slice high-resolution measurements, a 50 μ diameter steel MTF wire runs through the full 40mm thickness of the module.

part number
CTP700

page 4 of 7



CTP714 30 Line Pair High Resolution Module

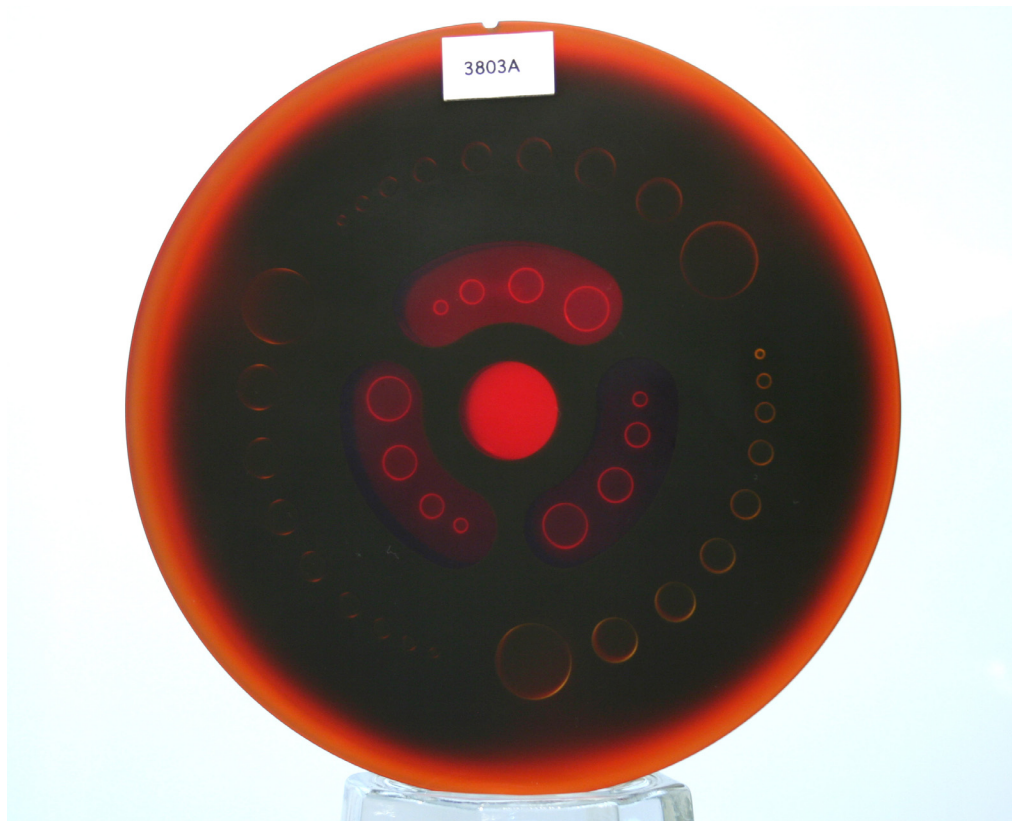
The unique design of the CTP714 minimizes visual artifacts by reducing the amount of high contrast material. The 2mm thick aluminum contrast figures are cast into position on the radial octagonal pattern, which has resolution sections ranging from 1 to 30 line pairs per cm. This resolution gauge pattern greatly reduces the possibility of streaking artifacts from other test objects. The combination of the octagonal design and the rotating mount with 45° indices enables all gauge segments to be measured either aligned with the x or y axis, or at a 45° or 90° angle.



深圳为尔康科技有限公司 联系人：曾祥满 手机：13632925349

QQ：274798107 电话：0755-28896837 地址：深圳市龙岗区沙平北路111号608A

网址：www.medicalQC.com 邮箱：szchina1718@163.com



CTP515 Low Contrast Module

The CTP515 consists of a series of cylindrical rods of various diameters and three contrast levels to measure low contrast performance. The 40mm-long rods provide consistent contrast values at all z-axis positions, thereby avoiding any volume-averaging errors as one scans through the section. In addition, the unique subslice test objects enable evaluation of the effectiveness of different scan protocols (pitch, slice width, and reconstruction algorithms) in resolving subslice low contrast objects.

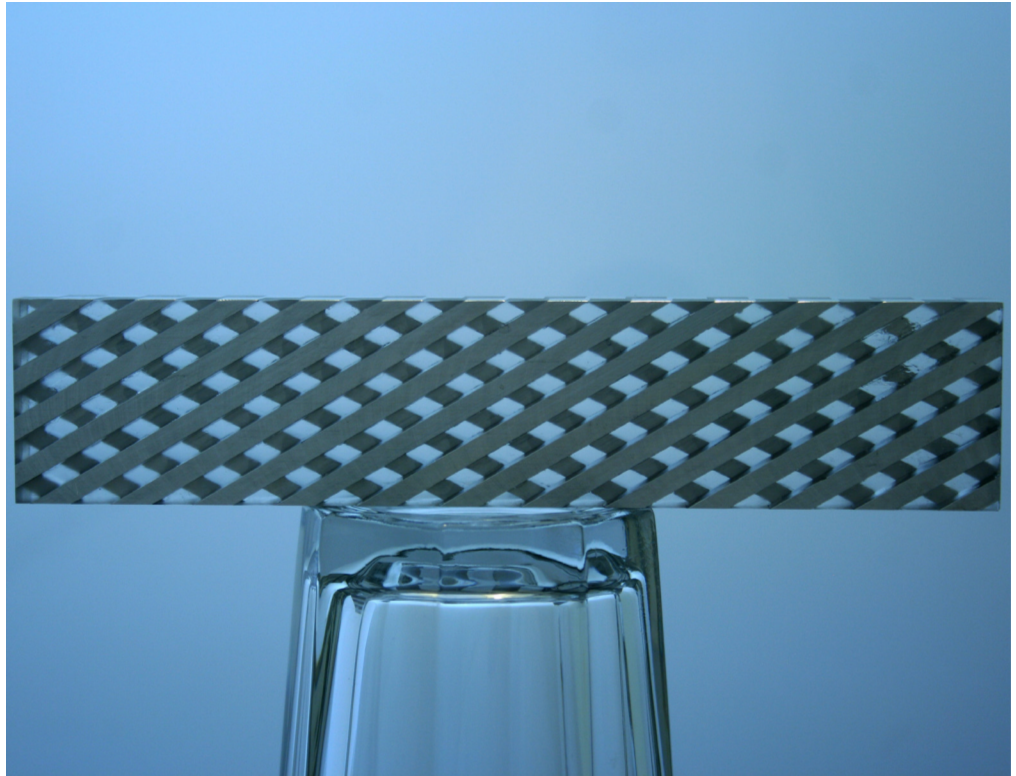
For selection of helical and multi-slice image protocols, unique subslice low contrast targets (truncated cylinders) have been included in this module. Comparing the images obtained by scanning the subslice targets with different imaging settings (slice width, pitch, and reconstruction algorithms) provides valuable information to assist with the selection of optimal protocols for identifying small low contrast objects such as tumors.

All of the various samples and the background material have equivalent effective atomic numbers; only the density is varied to produce changes in the effective attenuation coefficients.

Subslice targets have a nominal 1.0% contrast and z-axis lengths of 3, 5, and 7mm. For each of these lengths, there are targets of 3, 5, 7, and 9mm.

part number
CTP700

page 6 of 7

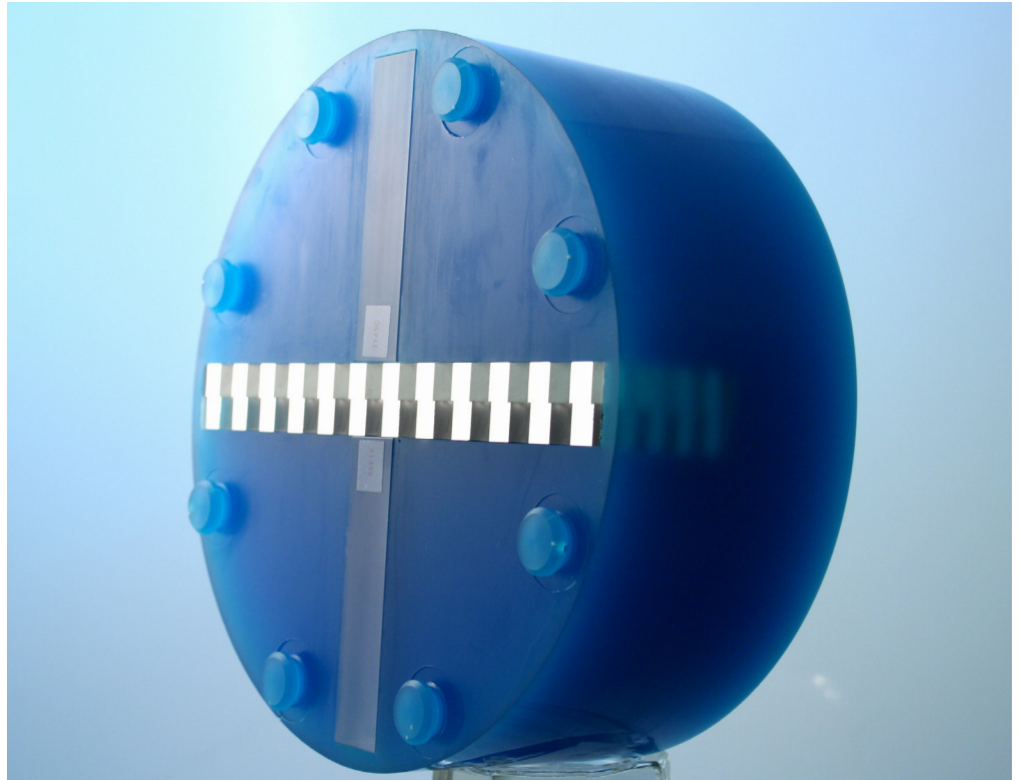


CTP721 Wave Insert and CTP723 Bead Blocks

Located at the top of the CTP712 Uniformity Section are three pockets that hold the CTP721 Wave Insert and 2 CTP723 Bead Blocks. The Wave Insert has repeating 4mm thick ramps alternating between aluminum and clear urethane rising at 30° angles from the slice plane. The inset contains two opposed alternating ramp sets. CT images of the Wave Insert have an alternating dark and light pattern resulting from the ramps. When a profile is made across the alternating pattern the resulting plot will reveal a cross between a square and triangle wave. The actual wave pattern is influenced both by slice thickness and scanner resolution. By analyzing the pattern along with MTF measurements from the Bead Blocks, slice width and/or high resolution variations across the slice can be identified. Additionally, the side view honeycomb-like pattern provides a test pattern for visual or analytic assessment of 3-D consistency.

part number
CTP700

page 7 of 7



CTP712 Uniformity Section

The CTP712 solid-image uniformity section provides consistent results, and is much more convenient than water-filled tanks, eliminating variations due to different water sources. Additionally, the Uniformity Material is extremely durable. The Catphan® Uniformity Material has a CT number within 2% (0-20H) of water. This solid material's high radial and axial uniformity makes it an ideal substitute for water. It has been thoroughly tested over a wide variety of variables in the x, y, and z planes and has proven stable in all applications.